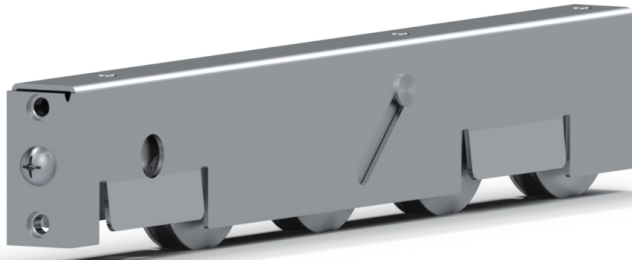


Residential: Sliding Door Quad Roller

AT 03-022020



Key Features & Benefits

- ✔ Smooth and easy operation with weights of up to 1,400 pounds
- ✔ Stainless steel construction maximizes corrosion resistance
- ✔ Perfect for large doors with narrow site lines

Technical Specifications

- ✔ Each roller assembly will carry 700 pounds (1,400-pound panel)
- ✔ Stainless steel construction
- ✔ 1.81 stainless steel precision bearing wheels
- ✔ Small envelope size: 1.82 X .95

Quad Roller

AmesburyTruth's Quad Roller is designed to provide easy and smooth gliding of large sliding doors featuring today's contemporary site lines. These end-adjust rollers contain 1.81 diameter stainless steel precision bearing wheels that roll like a dream under panel weights up to 1,400 pounds. They fit into profile channels as small as 1.82 tall by .95 wide making them the perfect addition to doors that maximize viewable area. Pair them with contemporary style handles and multipoint locks for an updated, premium door package.

Materials

- ✔ Stainless Steel

Warranty

- ✔ AT Standard 10 Year

Part Numbers

Part Numbers	Description	Carton Quantity
38.28.00.050	ROLLER, QUAD, SS	10

Recommended Mounting Screws

- ✔ ¼-20 Pan Head Machine Screws

Residential: Sliding Door Quad Roller

AT 03-022020

Technical Drawing

